

WEPs ELIGIBILITY CRITERIA

What type of organizations are eligible to join the WEPs community?

- ✓ Companies (private, public, state-owned and cooperatives) of **any size and industry**, established under national law, industry associations, chambers of commerce and private education institutions **committed to advancing gender equality and women's empowerment** in the workplace, marketplace and community are invited to join the WEPs community.

We are a start-up company. Can we join the WEPs community?

- ✓ **Yes**, we welcome eligible companies and organizations of all sizes, sectors, industries and countries.

Can non-governmental organizations and non-for-profit organizations join the WEPs?

- ✓ Only **companies, industry associations, chambers of commerce and private education institutions** are eligible to join.
- ✓ However, we welcome non-eligible partners and stakeholders to join our efforts and to embrace the WEPs as a framework for **dialogue and action** that advance gender equality and women's empowerment
- ✓ We invite civil society, international organizations, academia and governments to:
 - **Sign up** to the **WEPs Bulletin** by clicking [HERE](#) and scroll down to the bottom of the page.
 - Follow us on **Twitter** [@WEPRINCIPLES](#)

What type of organizations are eligible to be WEPs sponsors referring other organizations to sign the WEPs?

- ✓ We encourage all networks and associations to join our outreach efforts and actively call their members to commit to WEPs.



JOINING THE WEPs

How can my company join the WEPs?

Joining the WEPs requires two actions from your side:

1. The company's or organization's top executive **signs** the [CEO STATEMENT OF SUPPORT](#)
2. You **complete the online form** [HERE](#). The signed CEO statement of support needs to be **uploaded** to this online application. For further guidance note on how to complete the form, see [HERE](#).

Once completed and submitted, you will receive an **automatic email** confirming your submission.

Please note that **your company is only considered a WEPs signatory when your application has been approved. Once approved, you will receive another email confirming that your company's application has been approved** and welcoming your organization to the WEPs community.

How can I access guidance on completing the online form?

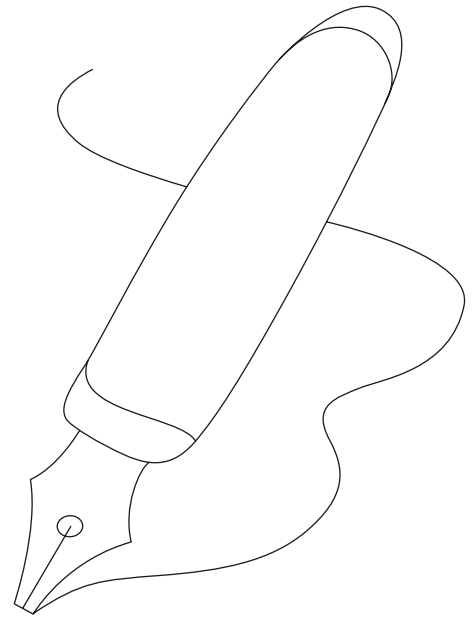
- ✓ Please refer to the **WEPs application guidance** document [HERE](#).

How do I know whether my application has been properly submitted?

- ✓ You will receive an **automatic email** upon submission of the application.

Is signing the CEO statement of support enough to be considered a WEPs signatory?

- ✗ **No**, while having the highest-level decision maker of the company, such as the Chief Executive Officer (CEO), signing the CEO Statement of Support is important, it is only the first step.
- ✓ You also need to complete the online form [HERE](#). This is where you upload the CEO statement of support.





Can we edit our CEO Quote?

- ✓ **Yes**, please create a [Company Profile Page on WEPs.org](#). This will give you access to update the CEO Quote.

We have a new CEO, what happens to our WEPs signature?

- ✓ Please email the contact information of the new CEO together with a new and signed CEO Statement of Support at weps@unwomen.org. We will help you with the update. The original date of WEPs commitment will remain the same.

I did not receive an automatic email upon the submission of the application. What should i do?

If you do not receive an email, we recommend that you check all spam, clutter and junk folders. If you still did not receive a confirmation email, please re-submit the application.

If you are experiencing any technical problems while attempting to submit your WEPs application we advise you to use Chrome instead of Internet Explorer.

We cannot find our company in the global WEPs company listing page. What do we need to do?

There could be several reasons for this:



Your application was incomplete: A member of our team will reach out to the focal points listed in the application for clarifications or additional information.



The application was declined: If for some reason, your application was declined, you will be notified by the WEPs Secretariat.



You did not complete the submission of the application: Please complete and resubmit your application. You will receive a confirmation once your application has been successfully submitted.

I sent the application via email but have not heard back from the WEPs secretariat. What should I do?

- ✓ Applications sent directly via email will **not** be processed.
- ✓ Please submit your application **through the online form**.

How long does the approval process take?

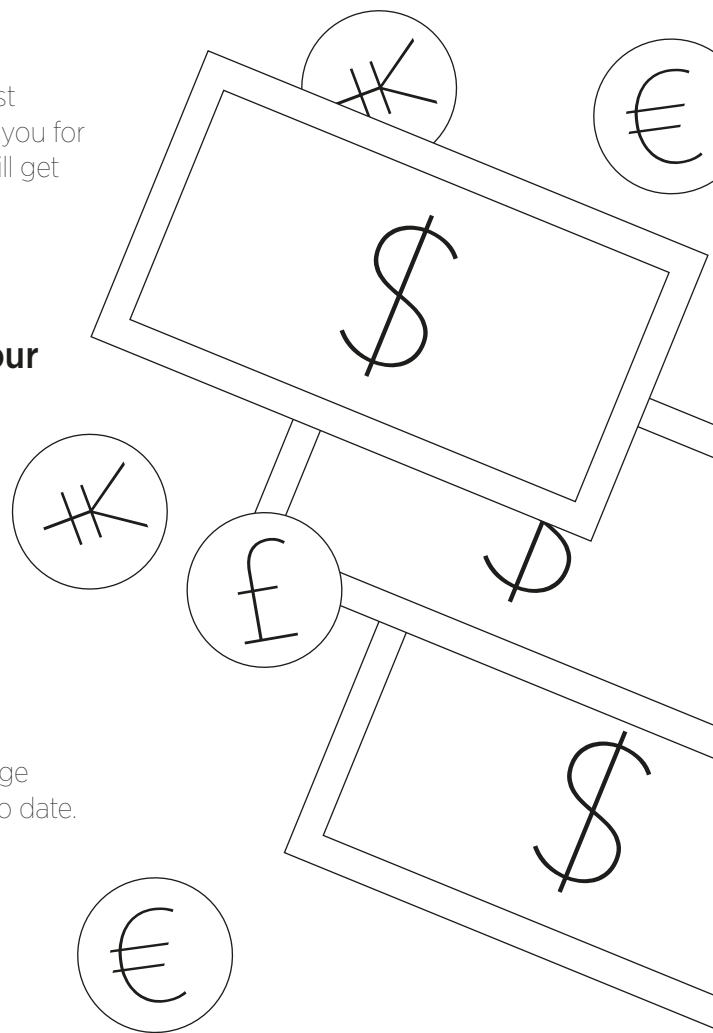
- ✓ Please allow **10-15 business days** for us to process the application. We will reach out to the primary and secondary contacts if we need additional information.

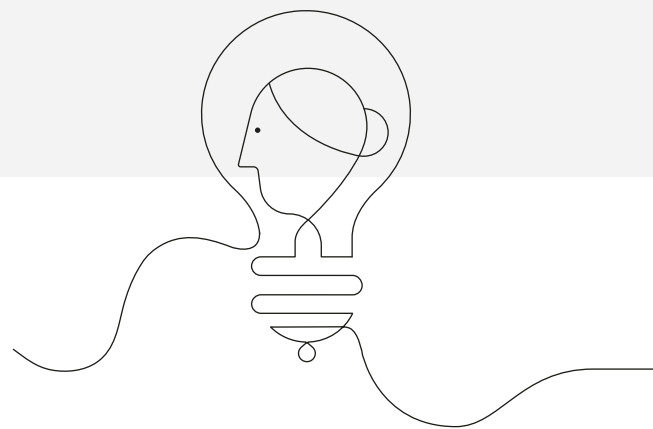
Is there a fee to join the WEPs?

- ✗ **No**, there is no fee to join the WEPs. However, you are most **welcome to donate to the WEPs Secretariat**. To thank you for supporting our work with a contribution, your company will get special recognition on our site and a donor badge on the company listing page [HERE](#).

Our primary and secondary contacts listed in our WEPs application form have changed, I can no longer log into our account and/or Company Profile Page?

- ✓ If both the primary and secondary contacts are new you may email their name and email to the Secretariat at: weps@unwomen.org and we will correct this manually.
- ✓ If you know that you or a colleague listed as a primary or secondary contact person will be changing roles/jobs you can prepare for this by creating a Company Profile Page on WEPs.org and making sure to keep all information up to date.





IMPLEMENTING THE WEPS

Do we need to focus on all seven principles?

- ✓ There are **no formal requirements** to implement the Principles in a particular order, in a specific way or in a particular timeframe. However, **we expect all WEPS signatories to make efforts** to advance gender equality in the workplace, marketplace and community.



Are we required to report on our efforts to implement the WEPS?

- ✓ While there is no formal obligation to report, **companies are strongly encouraged** to take steps to monitor and report on their progress since it shows **full commitment to the gender equality agenda**. Principle 7 explicitly calls on companies to report on progress and underscores that accountability and transparency go hand-in-hand. While not everything of value can be counted, it is difficult to manage and assess progress if not measured.

COMMUNICATING YOUR WEPS COMMITMENT

WE ARE EXCITED TO INFORM OUR STAKEHOLDERS THAT WE HAVE SIGNED THE WEPS. WHAT CAN WE DO?

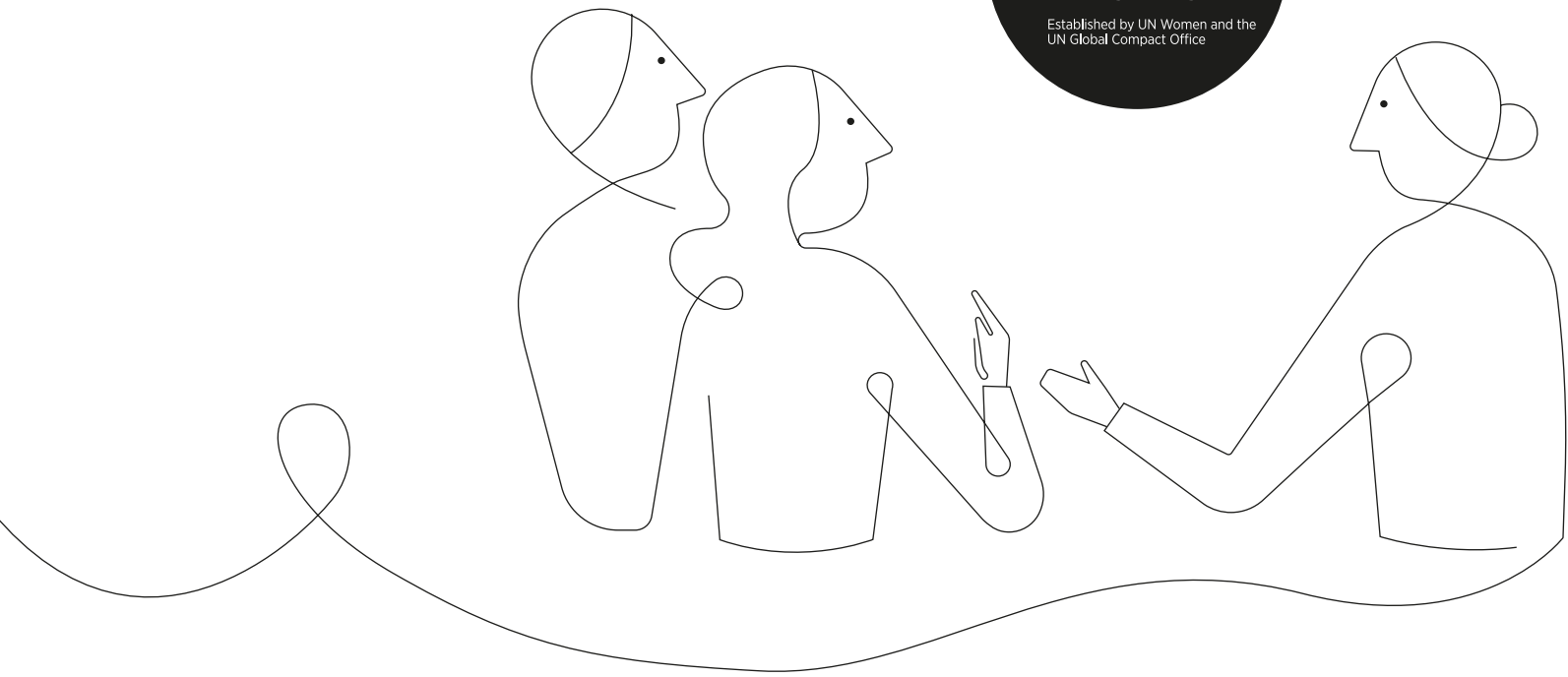
We are equally excited and encourage you to inform all your internal and external stakeholders. Please hold on until we have **confirmed that the application has been approved**. Once it has been approved, you will receive a **Welcome Package** with internal and external communication templates, key messages, social media and outreach materials (e.g. posters, flyers, banners, postcards).

May we use the “IN SUPPORT OF” logo?

- ✓ **Yes**, we encourage you to help promote the WEPs as much as possible. Please refer to the **Logo Usage Guidelines** [HERE](#). For each use case of the logo, you need to complete the **WEPs Brand and Logo Usage Agreement** [HERE](#). Once you have completed the agreement, high-resolution .PNG and .AI files will be provided.

May we use the WEPs logo?

- ✗ **No**, the two official WEPs logos are reserved for usage only by **UN Women and the UN Global Compact**.



Funded by:



European Union

Produced by:



Funded by the European Union



In support of:

**WOMEN'S
EMPOWERMENT
PRINCIPLES**

Established by UN Women and the UN Global Compact Office